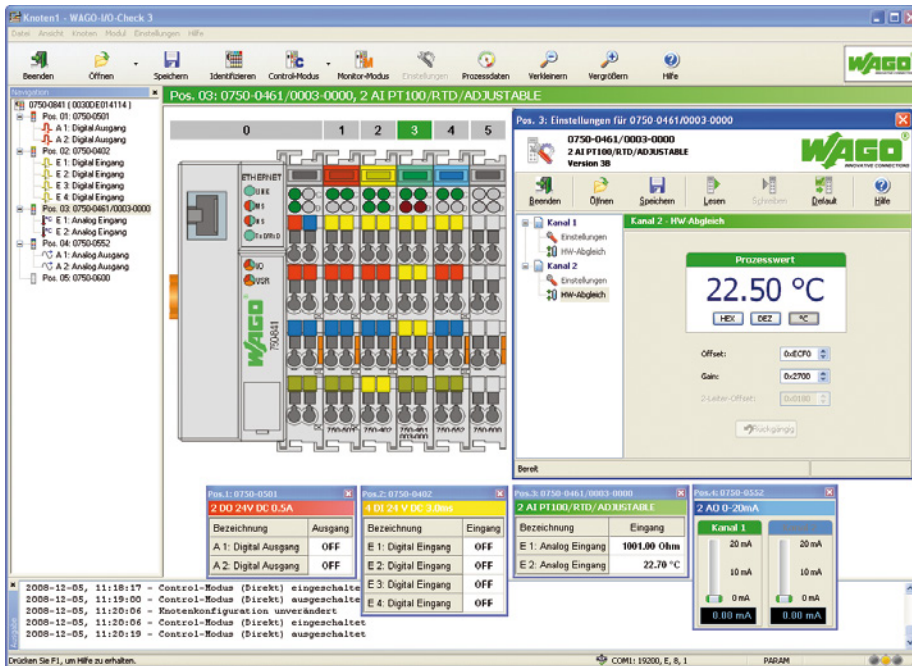


WAGO-I/O-CHECK



WAGO-I/O-CHECK is an easy-to-use Windows application for checking inputs and outputs and the display of a WAGO-I/O-SYSTEM 750 node, which does not have to be connected to the fieldbus system at the time.

The software reads the configuration from the node and displays it as a graphic on the screen. The graphic can be printed together with a configuration list as documentation.

With WAGO-I/O-CHECK, it is possible to display and determine the process data of the I/O modules. The field wiring, including all sensors and actuators, can thus be checked before startup.

Application-specific settings, such as the baud rate or type of sensors, can be made with certain interface, Pt100 and thermocouple modules.

The coupler must be connected at a vacant serial or USB port of the PC using the communication cable supplied in the set with the system to enable communication between WAGO-I/O-CHECK and the coupler.

WAGO-I/O-CHECK		
Version	Delivery type	Item No.
RS-232 Set	CD-ROM and serial communication cable	759-302
USB Set	CD-ROM and USB communication cable	759-302/000-923
CD	CD-ROM	759-920

Supported operating systems	Windows 7; Windows 10
System Requirements	
Processor	1 GHz or higher; with 32 bits (x86) or 64 bits (x64)
Memory	1 GB RAM (min.)
Hard disk space	150 MB (min.)
Graphics resolution	1024 x 786 (min.)
Other system requirements	CD-ROM and mouse required
Delivery type	Installation file (CD-ROM)
Data sheet and further information, see:	wago.com/759-302

Windows® is a registered trademark of Microsoft Corporation.